

D-SUB S 09P STR MA THR UNCSL PL2 GP RE

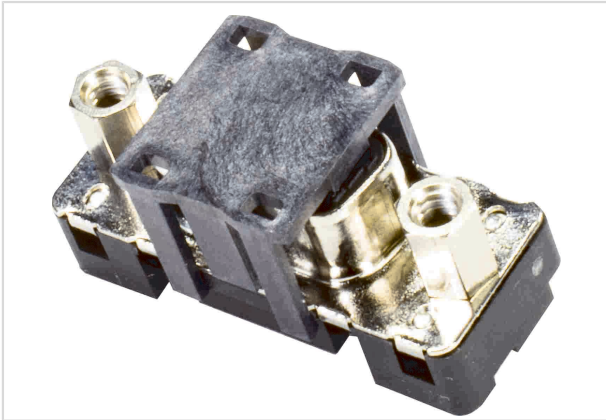


Image is for illustration purposes only. Please refer to product description.

| | |
|--------------------|---|
| Part number | 09 65 189 6783 741 |
| Specification | D-SUB S 09P STR MA THR UNCSL PL2 GP RE |
| HARTING eCatalogue | https://b2b.harting.com/09651896783741 |

Identification

| | |
|----------------------------|---------------------|
| Category | Connectors |
| Series | D-Sub |
| Identification | Standard |
| Element | Connector |
| Description of the contact | Stamped Straight |

Version

| | |
|--------------------|---|
| Termination method | Reflow soldering termination (THR) |
| Gender | Male |
| Size | D-Sub 1 |
| Connection type | Motherboard to daughtercard Mezzanine |
| Number of contacts | 9 |
| further contacts | With grounding pin |
| Termination length | 2.1 mm |
| Locking type | Fixing flange with fitted screw lock 4-40 UNC |
| Pack contents | 200 pieces on reel |

Technical characteristics

| | |
|------------------------------------|---------|
| Distance between rows | 2.84 mm |
| Contact spacing (termination side) | 2.74 mm |
| Rated current | 8 A |
| Rated current | @ 40 °C |



Pushing Performance
 Since 1945

Technical characteristics

| | |
|----------------------------------|-------------------------------------|
| Clearance distance | ≥1 mm |
| Creepage distance | ≥1 mm |
| Insulation resistance | >10 ¹⁰ Ω |
| Contact resistance | ≤10 mΩ |
| Tightening torque | ≤0.4 Nm Locking screw |
| Limiting temperature | -55 ... +125 °C |
| Insertion force | ≤30 N |
| Withdrawal force | ≥3.3 N ≤20 N |
| Performance level | 2 acc. to CECC 75301-802 |
| Mating cycles | ≥250 |
| Test voltage U _{r.m.s.} | 1 kV |
| Isolation group | I (600 ≤ CTI) |
| PCB thickness | ≥1.6 mm |
| Installation height | 6.2 mm |
| Hot plugging | No |
| Moisture Sensitivity Level (MSL) | 1 acc. to ECA/IPC/JEDEC J-STD-020D |
| Process Sensitivity Level (PSL) | R0 acc. to ECA/IPC/JEDEC J-STD-020D |

Material properties

| | |
|---|--|
| Material (insert) | Thermoplastic resin, glass-fibre filled (PPA) Shell: steel, nickel plated |
| Colour (insert) | Black |
| Material (contacts) | Copper alloy |
| Surface (contacts) | Noble metal over Ni |
| Material flammability class acc. to UL 94 | V-0 |
| RoHS | compliant with exemption |
| RoHS exemptions | 6(c): Copper alloy containing up to 4 % lead by weight |
| ELV status | compliant with exemption |
| China RoHS | 50 |
| REACH Annex XVII substances | Not contained |
| REACH ANNEX XIV substances | Not contained |
| REACH SVHC substances | Yes |
| REACH SVHC substances | Lead |



Pushing Performance
Since 1945

Material properties

California Proposition 65 substances Yes

California Proposition 65 substances Lead
Nickel

Specifications and approvals

Specifications DIN 41652
CECC 75301-802

Commercial data

Packaging size 1

Net weight 0.01 kg

Country of origin Romania

European customs tariff number 85366990

GTIN 5713140217584

eCl@ss 27440214 D-Sub coupler